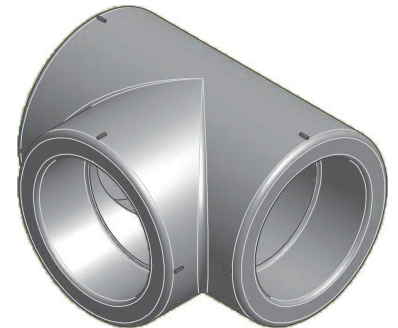


CODE	ND	D1	D	L1	L2	L	H1	H
27NT20	1/2" => 20 mm	0.71	1.30	0.63	1.06	2.13	1.06	1.71
27NT25	3/4" => 25 mm	0.83	1.38	0.67	1.24	2.48	1.24	1.93
27NT32	1" => 32 mm	1.18	1.81	0.79	1.46	2.91	1.46	2.36
27NT40	1" 1/4" => 40 mm	1.42	2.21	0.87	1.69	3.39	1.69	2.80
27NT50	1" 1/2" => 50 mm	1.81	2.76	0.98	2.01	4.02	2.01	3.39
27NT63	2" => 63 mm	2.32	3.47	1.14	2.44	4.88	2.44	4.17
27NT75	2" 1/2" => 75 mm	2.76	3.98	1.30	2.87	5.75	2.87	4.86
27NT90	3" => 90 mm	3.47	4.45	1.46	3.31	6.61	3.31	5.53
27NT110	4" => 110 mm	3.94	5.75	1.69	3.94	7.87	3.94	6.81
27NT125	5" => 125 mm	4.45	6.50	1.87	4.92	9.84	4.92	8.17



NIRON



ITEM: **NT**

DESC: TEE- SOCKET FUSION



DRAWING No:
NI10138

SHEET OF

REV.

1 1 0

www.nupiamerica.com - info@nupiamerica.com

All dimensions have to be considered in inches with 5% tolerance if not otherwise mentioned excluding values as per standard ASTM F2389

All right reserved - Drawing cannot be reproduced in anyway, failure todo so will entitle nupigeco to legal action. Information on this document are subject to change without notice