

Description

The 2300 offers a breakthrough in process control. It features the basic functionality of a PLC and a SCADA in a compact package for the price of a transmitter. The 2300 basic unit accepts a total of four inputs from direct 4-20 mA output probes and three square wave inputs from pulse instruments such as paddle wheel or magnetic flow meters. Four relay outputs are programmable from any of the seven inputs or via the difference of two analog inputs. More complex functions between inputs can be customized at the factory. More inputs or outputs are provided by purchase of an optional card.

The 2300 is fully web integrated. The web-based set-up wizard makes it easy and convenient to set up and configure from the convenience of a laptop, tablet or cell phone. E-mail or text notifications are a snap, and the unit status can be viewed from any browser after providing a password. If you want to use the 2300 itself for setup, the easily navigated menu system provides for full functionality in a common sense approach.

The 2300 provides a low-cost solution to solve your control problems. It includes a data logger that can store as much data as can be fit onto the internal SD card. An optional card enables Modbus/RTU over RS-485 or Modbus/TCP communication directly to a computer or system. All of this fits into a 1/4 DIN enclosure. No other controller packs so much capability into one small package at a great price. For operators of small industrial or municipal systems that think SCADA means expensive, the 2300 may be the perfect fit to both your control and your budget.

Features

- Inputs for four 4-20 mA sensors of any kind in any combination: pH, ORP, conductivity, dissolved O₂, Chlorine, and more.
- Inputs for three frequency or pulse counters, including flow sensors
- Outputs of four relays programmable for any of the inputs
- Alarm notifications by e-mail, text, and/or display for each input
- 100% web enabled from set-up to data collection to remote viewing with password protection
- Perform differential measurement from two analog inputs
- Data logging onto SD card and downloading from web
- 1/4 DIN panel mounted enclosure with adapter for wall mounting
- Three levels of security to allow the appropriate access to personnel

Applications

- Process control
- Analytical (pH, ORP, DO, etc) or process (temperature, pressure, flow, etc) instrumentation
- Small to medium sized manufacturers.
- Tank level monitoring

Aquametrix 2300 Multi-Parameter Controller

Technical Data

Inputs

Analog	Four 4-20 mA, expandable to 8 with additional input card*
Frequency	Three pulse inputs—typically for flow sensors
Counter	One accumulator for tracking equipment on time

Outputs

Relays	Four 120V/240 V @ 10A/5A expandable to eight*
Alarms	Configurable as E-mails and/or texts for alarms, alerts, or just reminders
Web	Remote viewing with a browser on a computer, tablet, or smart phone. Remote programming from any of these.
Datalogging	Logging of CSV files directly to micro SD card
Digital output	Optional: Modbus RTU over RS485 or Modbus TCP over TCP/IP communication card*

Ratings

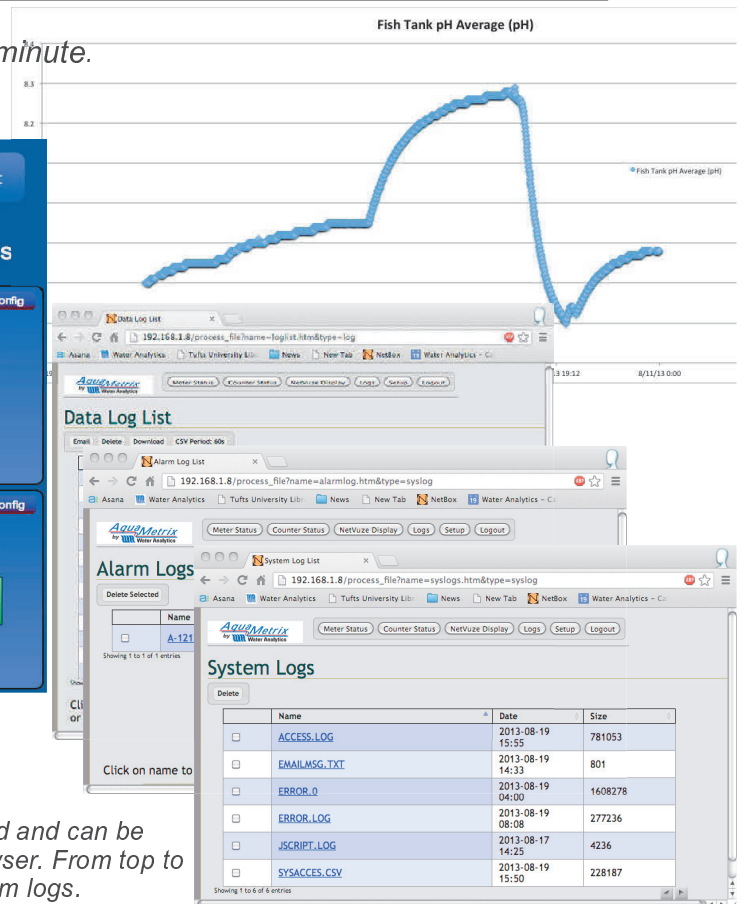
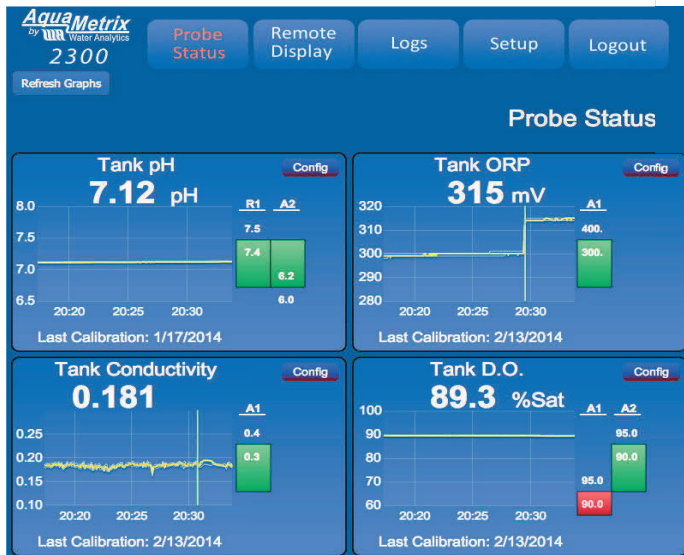
Current Rating	0.3 A
Temp Rating	0 to 70 °C.
Protection	NEMA 4x
Safety	TUV: Emissions Class A, FCC Part 15, ICES-001, Basic Immunity

Physical

Mounting	1/4 DIN panel mount or wall mount with optional hardware
Dimensions	Front cover: 6.5" wide x 5.5" tall; rear enclosure: 3.5" wide x 3.5" tall x 4.5" deep
Weight	2 lbs.

* One expansion card slot is available

From data log to data analysis takes less than a minute.



The web interface provides 100% web functionality from any laptop or smart device.



All logs are stored on a microSD card and can be downloaded remotely on a web browser. From top to bottom: Data logs, Alarm logs, System logs.